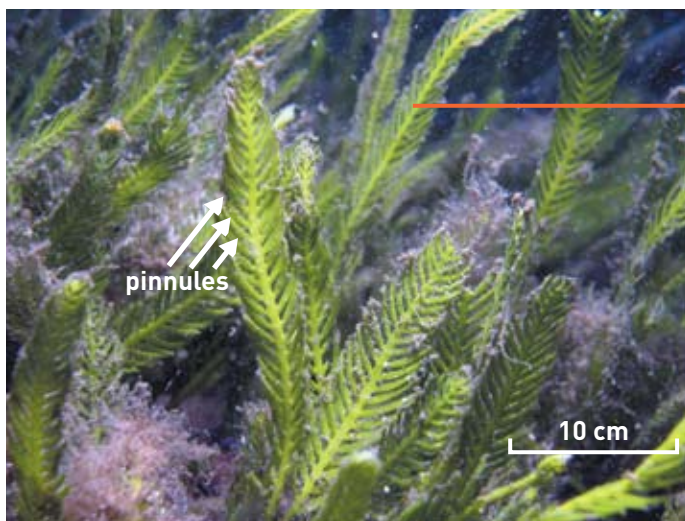


MARINE PEST: Aquarium Caulerpa *Caulerpa taxifolia*



Key features

- Flattened 2D fronds
- Pinnules upward curving
- Pinnules attach directly opposite one another
- Up to 15 cm long (>60 cm in deep water)

Habitat

- Up to 100 m depth; exposed & sheltered estuaries, coastal lagoons & bays
- Rock, sand, mud & seagrass beds

Impacts

- Overgrows native habitat & can establish vast beds on soft sediment, degrading fish habitat
- Tangles in nets & anchors

Known locations

- Native in subtropical to tropical Australia from Port Denison, WA to Southport, QLD
- Introduced to Port River & North Haven Marina SA; 14 coastal lakes and estuaries in NSW (see www.dpi.nsw.gov.au for all current locations).

— Native distribution

■ Likely to establish



REPORT IMMEDIATELY OUTSIDE KNOWN LOCATIONS!

1. Note the exact location
2. If possible, collect a sample and freeze in a plastic bag or take a photo
3. See www.marinepests.gov.au for your state contacts



An Australian Government Initiative

What it is not

Native species that look similar to the pest



Caulerpa scalpelliformis

Key Features

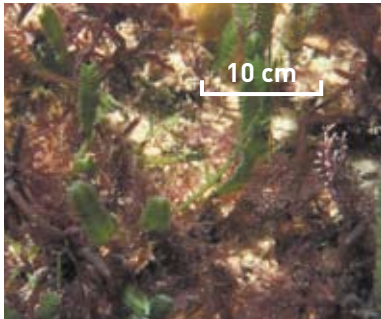
- Pinnules attach alternately, not opposite
- Fronds to 20 cm long

Habitat

- Primarily exposed rocky reef but also sand, mud and seagrass beds
- To 36 m depth

Known Locations

- Jervis Bay NSW to Whitford Beach WA; Tas



Caulerpa distichophylla

Key Features

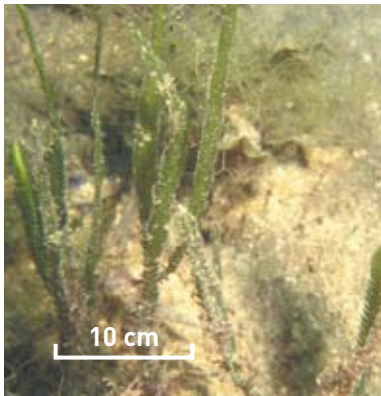
- Short pinnules attach opposite, closely spaced along midrib
- Fronds to 15 cm long

Habitat

- Soft substrate and reef in coastal areas, up to 7 m depth

Known Locations

- WA only: Dongara sound to King George Sound



Caulerpa cupressoides

Key Features

- Short pinnules, attach opposite, widely spaced along midrib

Habitat

- Soft/hard substrates; coastal areas

Known Locations

- Houtman Abrolhos, WA, around northern Australia to Lord Howe Island, NSW.

What you can do

- Inspect & clean niche areas & antifoul your vessel regularly
- Clean & dry equipment before transporting & using in a different location
- Check anchors, trailers & other equipment for tangled algae – *Caulerpa taxifolia* can live for two weeks out of water & reproduce from fragments as small as 2 mm

Learn more

Read the national biofouling management guidelines for your sector.

www.marinepests.gov.au

Photograph credits

This side: All images provided by John Huismann, Murdoch University, WA

Reverse side: Alan Millar, Royal Botanic Gardens Sydney (bottom left); Tim Glasby, NSW Dept.

Primary Industries (all other images)

This collaborative effort is supported by the Australian Government, state and territory governments, marine industries, researchers and conservation groups.

Last revised August 2008