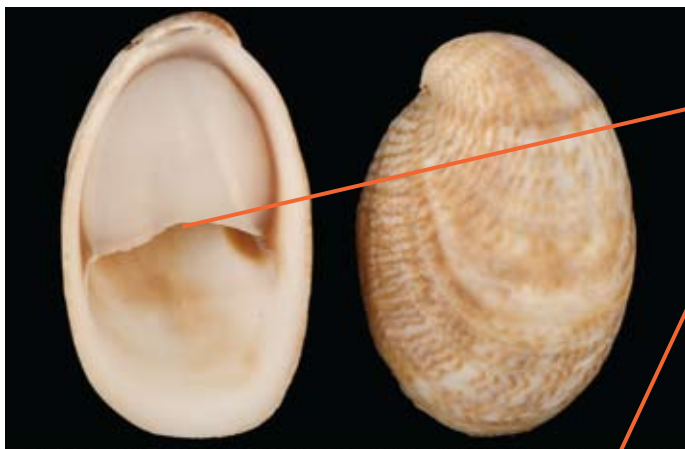


MARINE PEST: American slipper limpet *Crepidula fornicata*



A stack of
C. fornicata



Key features

- Large internal aperture with a shelf extending half its length
- Oval shaped, smooth shell
- Irregular growth lines
- Commonly found in stacks
- Shell colour white, yellow or pink with red/brown streaks
- Up to 5 cm long

Habitat

- Intertidal
- Shallow estuaries & coastal bays
- Mostly found on other shells or hard substrates in muddy areas, also found on sand, gravel & rocks

Impacts

- Competes with natives for food & space
- Impacts commercial oyster beds

Known locations

- Not yet in Australia

Likely to establish



REPORT IMMEDIATELY OUTSIDE KNOWN LOCATIONS!

1. Note the exact location
2. If possible, collect a sample and freeze in a plastic bag or take a photo
3. See www.marinepests.gov.au for your state contacts



An Australian Government Initiative

What it is not

Native species that look similar to the pest



Northern slipper shell
Bostrycapulus pritzkeri
(formerly *Crepidula aculeata*)

Key Features

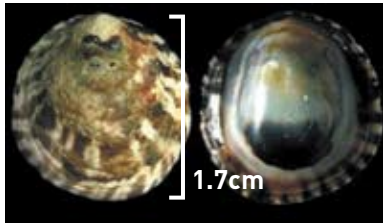
- Exterior of shell not smooth, with spines or bumps
- Shell brown & white
- Up to 3 cm long

Habitat

- Intertidal to subtidal
- Found attached to other shells, stones or mangroves in sand or mud

Known Locations

- From Shark Bay WA around northern Australia to south-east Vic



Limpet
Notoacmea mayi

Key Features

- Shell has no internal shelf
- Shell light brown to grey with mottled bands
- Up to 1.5 cm long

Habitat

- Hard substrates in upper intertidal zone

Known Locations

- NSW; Vic; around Tas; eastern SA; western Vic



Nerita polita

Key Features

- Glossy, smooth shell with fine growth lines
- Shell marbled, streaked or banded with white, cream, grey or pink
- Up to 3 cm long

Habitat

- Often buries in sand, surfacing at low tide to graze on rocks
- Abundant in tropics

Known locations

- North West Cape WA to Sydney NSW

What you can do

- Inspect & clean niche areas & antifoul your vessel regularly
- Clean & dry equipment before transporting & using in a different location

Learn more

Read the national biofouling management guidelines for your sector.

www.marinepests.gov.au

Photograph credits

This side: Richard Willan, Museum & Art Gallery of the Northern Territory (top); © 2007 Guido & Philippe Poppe - www.conchology.be/en/home/home.php (middle); P.N. Lewis (bottom)
Reverse side: Richard Willan, Museum & Art Gallery of the Northern Territory (top); Jack Sewell, MarLIN (bottom images)

This collaborative effort is supported by the Australian Government, state and territory governments, marine industries, researchers and conservation groups.

Last revised August 2008