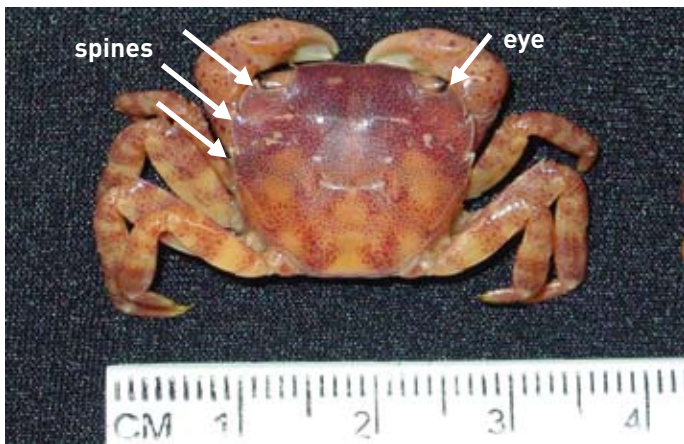


MARINE PEST:

Asian shore crab

Hemigrapsus sanguineus



Live specimen of *H. sanguineus* under water

REPORT IMMEDIATELY OUTSIDE KNOWN LOCATIONS!

1. Note the exact location
2. If possible, collect a sample and freeze in a plastic bag or take a photo
3. See www.marinepests.gov.au for your state contacts

Key features

- 3 spines on each side of eyes
- Banding pattern on walking legs & spots on claws
- Square shaped green/purple to orange/brown shell
- Shell up to 4 cm wide

Habitat

- Under rocks, shells, debris & artificial structures
- Intertidal to shallow subtidal
- Estuaries, exposed rocky coasts & tidal flats
- Tolerates a wide range of temperatures

Impacts

- Broad diet, competes with & predares on native species (crabs, fish & shellfish)

Known locations

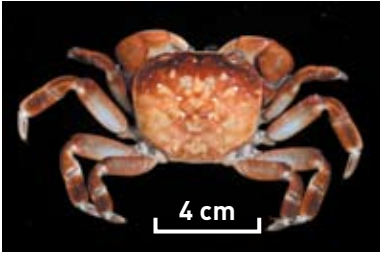
- Not yet in Australia

Likely to establish



What it is not

Native species that look similar to the pest



Cyclograpsus species

Key Features

- No spines on side of eyes
- Mottled red/brown/purple markings on yellow shell
- Shell up to 4 cm wide

Habitat

- Intertidal
- Sheltered, moderately exposed rocky & boulder covered shores

Known Locations

- NSW; Vic; Tas; SA; WA (north to Shark Bay); Qld



Paragrapsus species

Key Features

- 3 spines on each side of eyes
- First walking legs have felt patch on inner side
- Yellow/brown shell with dark red spots
- Shell up to 4.5 cm wide

Habitat

- Under stones & burrows in mud
- Intertidal to 1.5 m depth
- Estuaries & sheltered coasts

Known Locations

- South of Narooma, NSW; Vic; Tas; SA

What you can do

- Inspect & clean niche areas & antifoul your vessel regularly
- Clean & dry equipment before transporting & using in a different location

Learn more

Read the national biofouling management guidelines for your sector.

www.marinepests.gov.au

Photograph credits

This side: All images provided by Michael Marmach, Museum Victoria

Reverse side: Amy Benson, US Geological Survey (top); Jerry Prezioso, NOAA/NMFS

Narragansett Lab (bottom)

This collaborative effort is supported by the Australian Government, state and territory governments, marine industries, researchers and conservation groups.

Last revised August 2008