

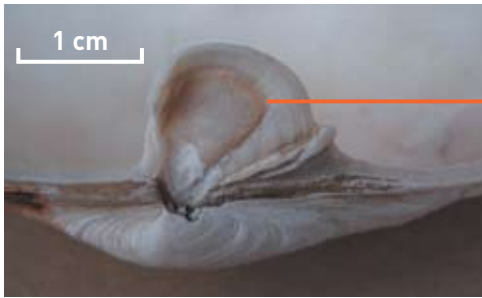
MARINE PEST:

Soft shell or long-necked clam

Mya arenaria



One half of *Mya arenaria* shell showing scooped out projection



Key features

- Very different shells; one has a distinctive large scooped out projection & the other a pit. They fit together but gape at both ends when closed
- Shell is thin, oval, chalky, white with rough exterior & uneven growth lines
- Up to 15 cm long

Mya arenaria stained from mud



Mya arenaria showing protruding brown siphon

Habitat


- Buried up to 30 cm deep in sand, mud, clay & gravel mixes
- Mainly upper intertidal; also in shallow subtidal

Impacts

- Outcompetes native bivalves, changes characteristics of sediments & composition of bottom dwelling communities

Known locations

- Not yet in Australia

 Likely to establish



REPORT IMMEDIATELY OUTSIDE KNOWN LOCATIONS!

1. Note the exact location
2. If possible, collect a sample and freeze in a plastic bag or take a photo
3. See www.marinepests.gov.au for your state contacts



An Australian Government Initiative

What it is not

Native species that look similar to the pest



Gaper clam
Lutraria rhynchaena

Key Features

- Shell is solid, elongated & gapes when shut
- Fine concentric ridges
- Shell colour is off-white often covered with a brown "skin"
- Up to 12 cm long

Habitat

- Usually deeply buried in sheltered intertidal sand & mud

Known Locations

- NSW; Vic; Tas; SA; southern WA



Venus cockle
Venerupis galactites

Key Features

- Solid white shell with identical valves that close completely without a gape
- No scooped out projection
- Up to 5 cm long

Habitat

- In sand, estuaries, bays & sheltered coasts
- Intertidal

Known Locations

- NSW; Vic; Tas; SA; southern WA



Lantern/gaper shell
Laternula recta/rostrata

Key Features

- Shell elongate & gapes at both ends when closed
- Shell sculpted with fine, concentric ridges & growth lines
- Shell colour white
- Up to 6 cm long

Habitat

- In mud or sand

Known Locations

- NSW; Vic; SA

What you can do

- Inspect & clean niche areas & antifoul your vessel regularly
- Clean & dry equipment before transporting & using in a different location

Learn more

Read the national biofouling management guidelines for your sector.

www.marinepests.gov.au

Photograph credits

This side: All images provided by © 2007 Guido & Philippe Poppe - www.conchology.be/en/home/home.php
Reverse side: Luis A. Solorzano, www.lasphotos.com
<http://californiabiota.com> (centre right);
all other images supplied by Andrew Cohen, San Francisco Estuary Institute, www.exoticsguide.org

This collaborative effort is supported by the Australian Government, state and territory governments, marine industries, researchers and conservation groups.

Last revised August 2008