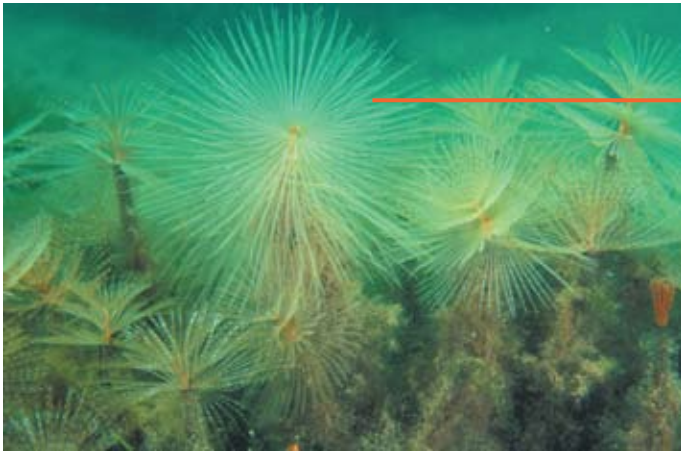


# MARINE PEST: European fan worm *Sabella spallanzanii*



## Key features

- Spiral fan of feeding tentacles
- Flexible, leathery tube
- Fan white/pale fawn/orange/banded red/brown
- Tubes up to 40 cm long, solitary or in groups

## Habitat


- Tubes attach to hard surfaces, artificial structures, rocks, shells & seagrass on soft sediments
- Sheltered temperate waters, to 30 m depth

## Impacts

- Forms dense colonies consuming vast amounts of food
- No known predators in Australia
- Fouls aquaculture structures increasing cost for industry

## Known locations

- Cockburn Sound, Fremantle, Bunbury, Albany & Esperance WA; metro Adelaide coast SA; Port Phillip Bay Vic; Devonport Tas; Eden NSW

 Likely to establish



## REPORT IMMEDIATELY OUTSIDE KNOWN LOCATIONS!

1. Note the exact location
2. If possible, collect a sample and freeze in a plastic bag or take a photo
3. See [www.marinepests.gov.au](http://www.marinepests.gov.au) for your state contacts



An Australian Government Initiative

## What it is **not**

### Native species that look similar to the pest



#### *Sabellastarte* species

##### Key Features

- Fan is U-shaped not spiral shaped
- Fans are white or purple with orange/purple/brown bands
- Usually solitary, not densely clumped
- Tube up to 5 cm long

##### Habitat

- Exposed rocky reef and artificial structures
- Subtidal to 200 m depth

##### Known Locations

- Widely distributed: NSW; Vic; Tas; SA, north-west coast WA

## What you can do

- Inspect & clean niche areas & antifoul your vessel regularly
- Clean & dry equipment before transporting & using in a different location
- Check anchors & other equipment for tangled organisms

## Learn more

Read the national biofouling management guidelines for your sector.

[www.marinepests.gov.au](http://www.marinepests.gov.au)

#### Photograph credits

*This side: Mark Norman, Museum Victoria (top)  
Reverse side: CSIRO Marine & Atmospheric Research (top and bottom left); Tim Glasby, NSW Dept. Primary Industries (bottom right)*

This collaborative effort is supported by the Australian Government, state and territory governments, marine industries, researchers and conservation groups.

*Last revised August 2008*