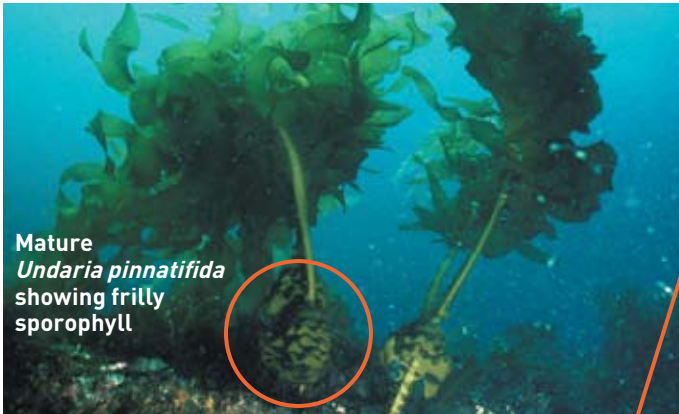
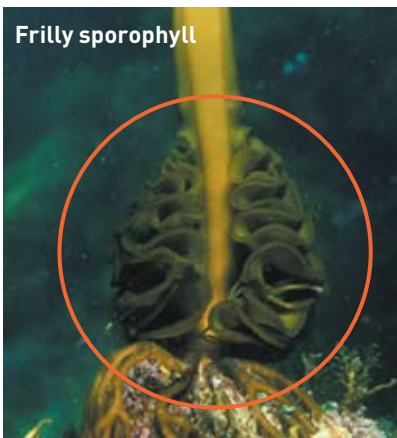


MARINE PEST: Japanese seaweed or Wakame *Undaria pinnatifida*



Mature *Undaria pinnatifida* showing frilly sporophyll



Frilly sporophyll



Key features

- Frilly sporophyll near base of mature plant
- Mature plant only found from early winter to late summer
- Strap-like midrib
- Smooth thin blades stop well short of base
- Generally brown/green
- Up to 1 m long, sometimes to 3 m

Habitat


- Cold temperate ocean waters
- Lower intertidal to 20 m depth
- Rock, reef and stones, artificial structures and aquaculture equipment

Impacts

- Can rapidly form dense forests on any available space & overgrows natives

Known locations

- Near-shore habitats south-east & east coast of Tas; Port Phillip Bay Vic

 Likely to establish



REPORT IMMEDIATELY OUTSIDE KNOWN LOCATIONS!

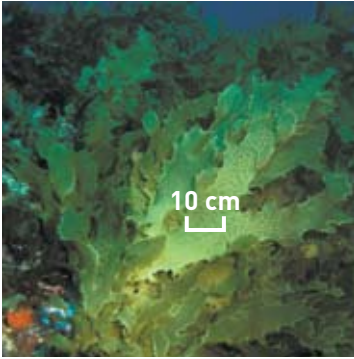
1. Note the exact location
2. If possible, collect a sample and freeze in a plastic bag or take a photo
3. See www.marinepests.gov.au for your state contacts



An Australian Government Initiative

What it is **not**

Native species that look similar to the pest



Common kelp *Ecklonia radiata*

Key Features

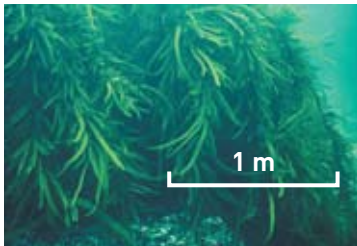
- No midrib or frilly sporophyll
 - Rough blades not smooth
- Note: *E. radiata* is hard to distinguish from juvenile *U. pinnatifida*; *E. radiata* is more leathery

Habitat

- Rocky shores
- Moderate exposures
- Subtidal to 44 m depth

Known Locations

- Southern Australia from Caloundra Qld to Kalbarri, WA; Tas



Phyllospora comosa

Key Features

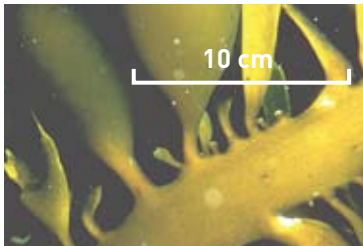
- No midrib or frilly sporophyll
- Sawtooth edged fronds
- Branches close together
- Blades terminate at base

Habitat

- Hard substrates
- Exposed coasts
- Subtidal to 20 m depth

Known Locations

- From Port Macquarie NSW to Robe, SA; Tas



What you can do

- Inspect & clean niche areas & antifoul your vessel regularly
- Clean & dry equipment before transporting & using in a different location
- Check anchors & other equipment for tangled algae

Learn more

Read the national biofouling management guidelines for your sector.

www.marinepests.gov.au

Photograph credits

This side: John Huisman, Murdoch University, WA (top); Alan Millar, Royal Botanic Gardens Sydney (all other images)

Reverse side: All images supplied by CSIRO Marine and Atmospheric Research

This collaborative effort is supported by the Australian Government, state and territory governments, marine industries, researchers and conservation groups.

Last revised August 2008